

# BELAIR

## HILLSIDE RESIDENCIES

Actual View



## LOCATION MAP



60 Minutes Drive From  
CHANDIGARH

90 Minutes Drive From  
CHANDIGARH  
INTERNATIONAL AIRPORT

25 Minutes Drive From  
KASAU LI

05 Hours Drive From  
DELHI

## CONTACT

9815000128, 9815288999



SET YOUR SIGHTS ON GLORIOUS MOUNTAINS  
OVERFLOWING WITH SENSATIONAL AMENITIES

Step into a realm of lavish living and vibrant sophistication with BelAir's prodigious and exquisite communities. We build homes that redefine living standards, putting your needs and aspirations first. We develop thriving neighbourhoods that reflect the quality of life you deserve. We create healthy, lively communities that blend extravagance with glamour and white-gloved finesse.

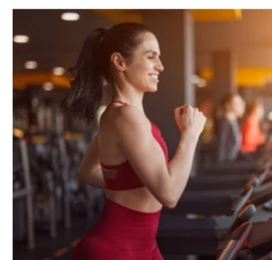
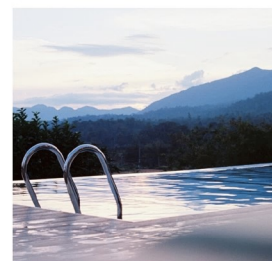






## A GEM IN THE MOUNTAINS

BelAir is more than just a community, it is a way of life. Its balance of open spaces and beautiful homes soothes the senses and puts your mind at rest as you take in the majestic ghaatis and spectacular trails.



## AMENITIES

Residents of BelAir live in prime luxury, with ready access to numerous amenities.

- 01/ *Gymnasium*
- 02/ *Rooftop swimming pool*
- 03/ *Steam and sauna*
- 04/ *Yoga Center*
- 05/ *Badminton Court*
- 06/ *Outdoor play area*

## A WORRY FREE LIFE AWAITS YOU



1, & 2 BHK  
Apartments



Gated Community  
with 24x7 Security



Concierge  
Desk



Multi Cuisine  
Restaurant



Daily Needs  
Store



Laundry  
Room



Kids Play  
Area



Health  
Center



Driver  
Dormitory



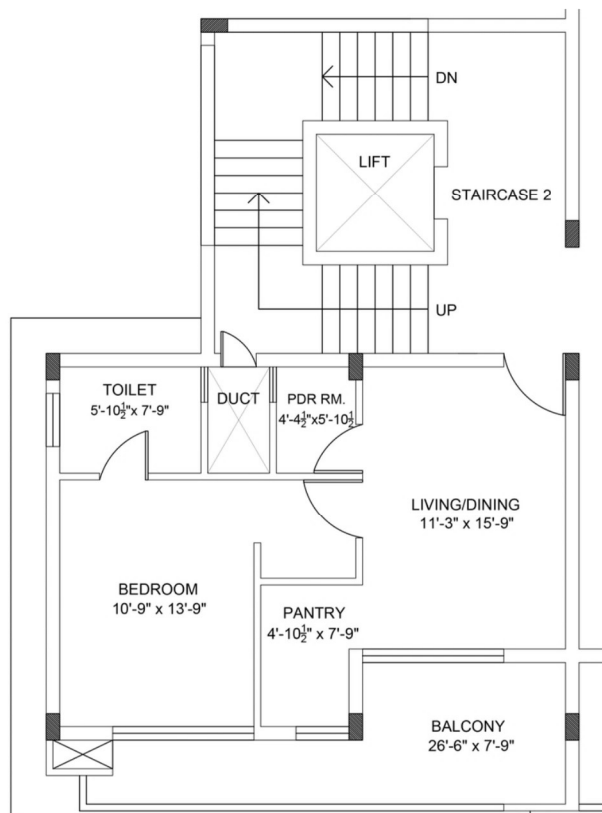
## A BREATH OF FRESH AIR

BelAir is a pure manifestation of finesse and art blended with convenience. Designed to exude the utmost comfort and pleasure.

The project perfectly brings together the serenity and tranquility with ultra-modern amenities.



## 1 BHK FLOOR PLAN

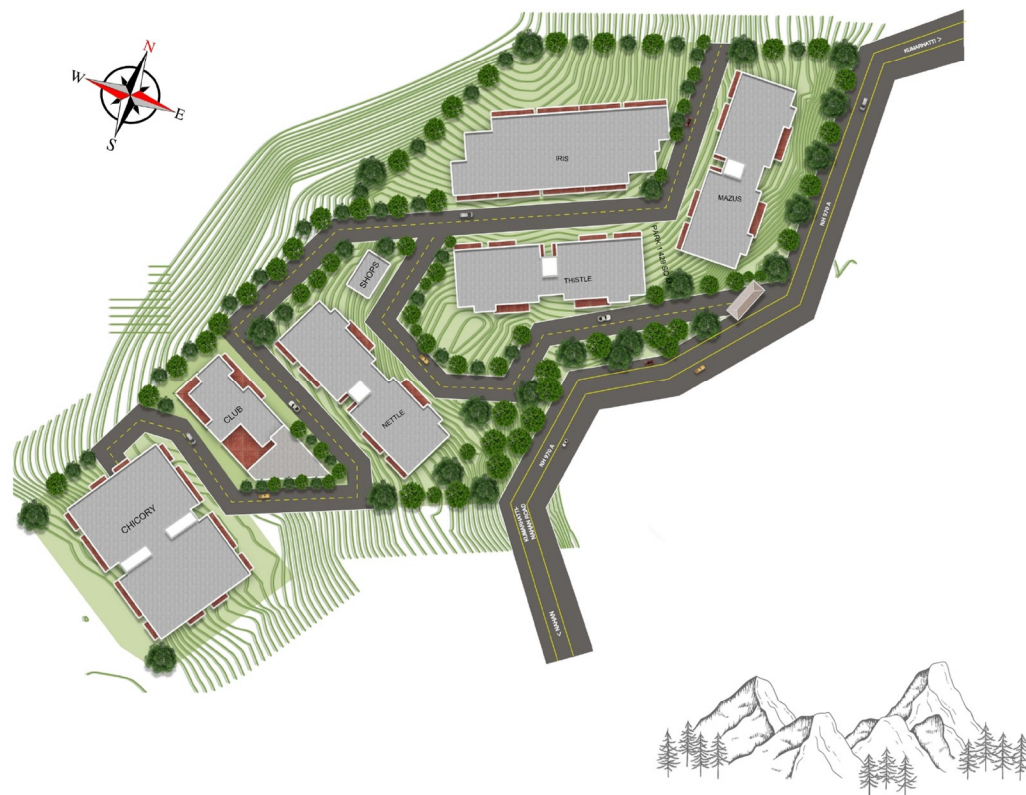


CARPET AREA	BUILT UP + BALCONY	SUPER AREA
539.3 Sq.ft	719.6 Sq.ft	1030 Sq.ft

BELAIR

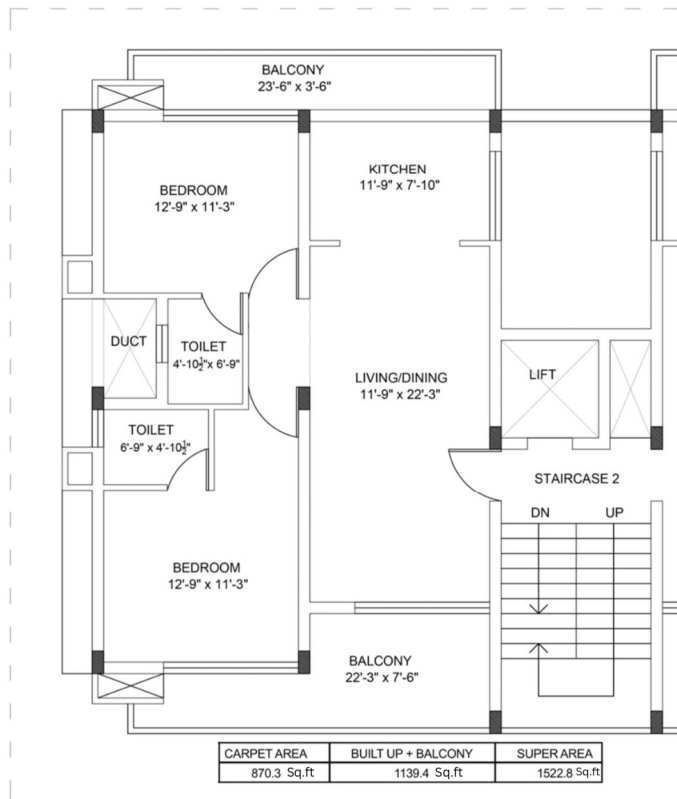
## SITE MAP

Overlooking the beautiful view of the mountains and located in close proximity to some of the most iconic landmarks of Himachal Pradesh, BelAir is the perfect combination of privacy and connectivity, bringing a true sense of belonging to its community





## 2 BHK FLOOR PLAN

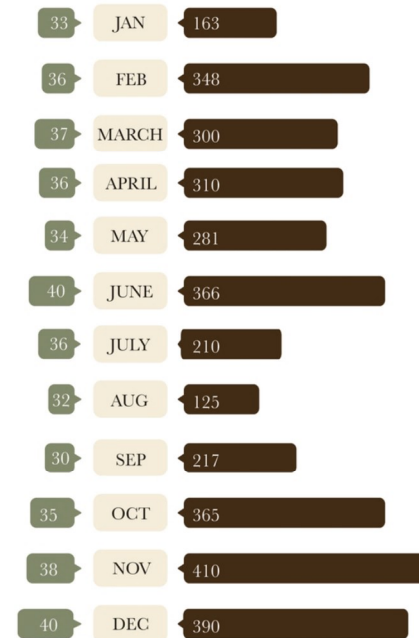


BELAIR

## AIR QUALITY INDEX

BELAIR

DELHI



Altitude : 5500 Ft Above Sea Level

Climate : Misty clouds with chilly weather in the evenings

Summer Temperature : Minimum 17° C | Maximum 28° C

Winter Temperature : Minimum 2° C | Maximum 18° C



Bedroom & Living Room	<ul style="list-style-type: none"> <li>• External Window</li> <li>• Doors</li> <li>• Flooring</li> <li>• Walls</li> <li>• Others</li> </ul>	<ul style="list-style-type: none"> <li>• UPVC/Aluminium</li> <li>• Flush Doors/Shutters with hardwood frame/Steel doors</li> <li>• Vitrified tiles/Wooden flooring</li> <li>• Acrylic emulsion</li> <li>• Wardrobes in all bedrooms</li> </ul>
Modular Kitchen	<ul style="list-style-type: none"> <li>• Walls</li> <li>• Flooring</li> <li>• Kitchen Slab</li> <li>• External Windows</li> <li>• Walls</li> </ul>	<ul style="list-style-type: none"> <li>• Glazed tiles up to 2ft. from slab level</li> <li>• Vitrified tiles</li> <li>• Granite</li> <li>• UPVC/Aluminium</li> <li>• Acrylic emulsion</li> </ul>
Bathrooms	<ul style="list-style-type: none"> <li>• Walls</li> <li>• Flooring</li> <li>• Doors</li> <li>• External Window</li> <li>• Fitting</li> </ul>	<ul style="list-style-type: none"> <li>• Glazed tiles up to door height and Acrylic emulsion</li> <li>• Anti skid tiles</li> <li>• Flush doors with polish/paint</li> <li>• UPVC/Aluminium</li> <li>• Branded Chinaware &amp; CP Fittings</li> </ul>
Staircase/ Common Corridors	<ul style="list-style-type: none"> <li>• Walls</li> <li>• Flooring</li> <li>• Others</li> </ul>	<ul style="list-style-type: none"> <li>• Acrylic Emulsion</li> <li>• Granite</li> <li>• MS railing</li> </ul>
Balconies	<ul style="list-style-type: none"> <li>• Flooring</li> <li>• Others</li> </ul>	<ul style="list-style-type: none"> <li>• Vitrified Tiles</li> <li>• MS railing</li> </ul>
Power Backup	<ul style="list-style-type: none"> <li>• Paid Power Backup</li> </ul>	<ul style="list-style-type: none"> <li>• 3 KVA to 4 KVA (As per category of apartments)</li> </ul>
Electrical Work	<ul style="list-style-type: none"> <li>• Electrical Work</li> </ul>	<ul style="list-style-type: none"> <li>• Modular switches, Cable, TV &amp; Telephone points</li> </ul>
Finishing	<ul style="list-style-type: none"> <li>• Internal Finish</li> <li>• External Finish</li> </ul>	<ul style="list-style-type: none"> <li>• Acrylic emulsion/putty on walls &amp; all room ceilings</li> <li>• Exterior emulsion weather proof paint/texture paint</li> </ul>
Plumbing Work	<ul style="list-style-type: none"> <li>• Plumbing Work</li> </ul>	<ul style="list-style-type: none"> <li>• SWR, PPR, CPVC, UPVC pipes of reputed make</li> </ul>



## INTERIOR FEATURES

### WHITE GOODS

- Smart TV
- Digital Safe
- Geysers & Exhaust Fans
- Chimney
- Induction Plate
- Microwave
- Refrigerator
- Water Purifier
- Room Heating

### FURNITURE & FIXTURES

- Double Bed with Night Stands
- Spring Mattress
- Bed Linen
- Curtains
- Sofa with Centre Table
- Dining Table
- Outdoor Furniture
- Decorative Lights
- Vanity with Mirror
- Crockery / Cutlery / Cookware

\*Interiors by Renowned Designers

